

Watlington Neighbourhood Development Plan



Maps Supplement

Our Community

Our Plan

Watlington Parish Council

18 July 2017



Maps

| | |
|--|----|
| Map 1: Designated Neighbourhood Plan Area | 1 |
| Map 2: Development history of Watlington town | 2 |
| Map 3: Areas with special designations – built environment | 3 |
| Map 4: Areas with special designations – natural environment | 4 |
| Map 5: Selected Sites..... | 5 |
| Map 6: Green Spaces..... | 6 |
| Map 7: Key Places..... | 7 |
| Map 8: Watercourses | 8 |
| Map 9: 2013 SHLAA sites | 9 |
| Map 10: Development sites..... | 10 |
| Map 11: Retail shops – A1 and A3 | 11 |
| Map 12: Public Rights of Way..... | 12 |

All maps contain Crown Copyright Data ©, Crown Copyright and Database Right [2012] and have been prepared by Watlington Parish Council under the PSMA agreement 0040083989. These maps may not be reproduced in any form without explicit approval from Ordnance Survey Limited and Watlington Parish Council.

Map 4 contains flood zone mapping provided by the Environment Agency under the Open government Licence.

Map 12 contains Public Rights of Way data derived from the Oxfordshire Definitive Map. The routes of the paths shown on map 12 are indicative, and include only paths within or connecting to the Parish of Watlington. The Definitive Map is available online at

<https://www.oxfordshire.gov.uk/cms/content/definitive-map-and-statement-online>

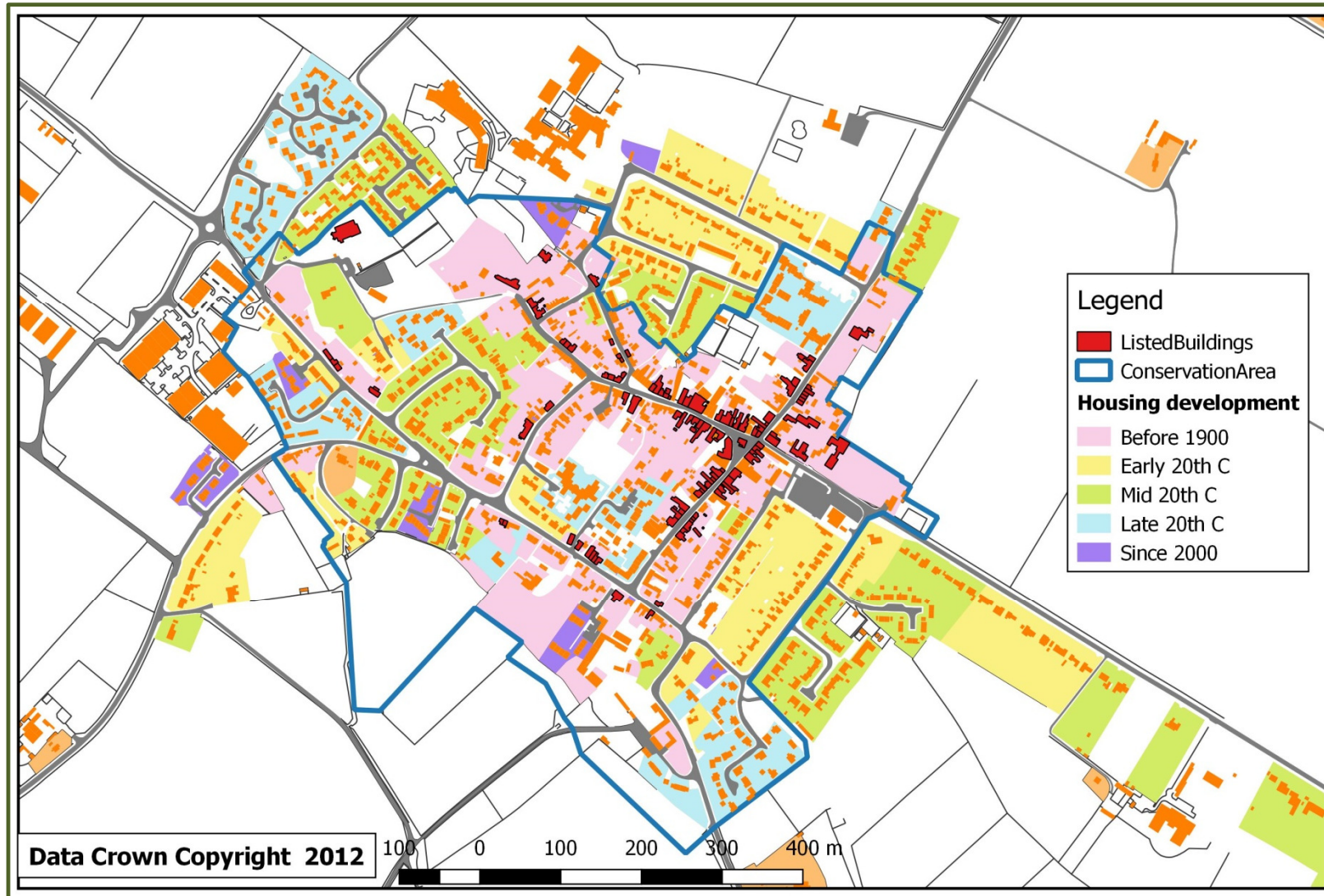


Map 1: Designated Neighbourhood Plan Area



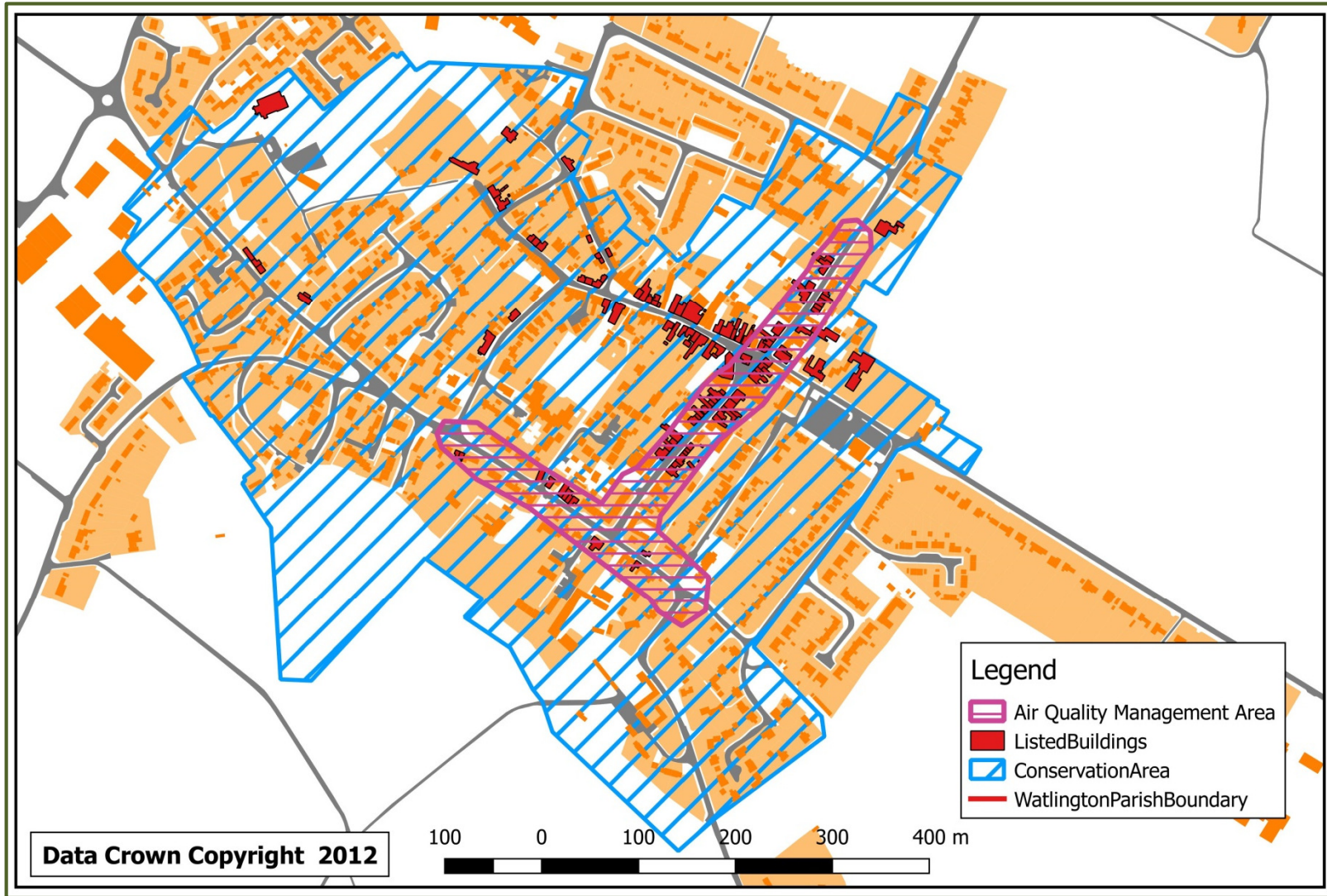


Map 2: Development history of Watlington town



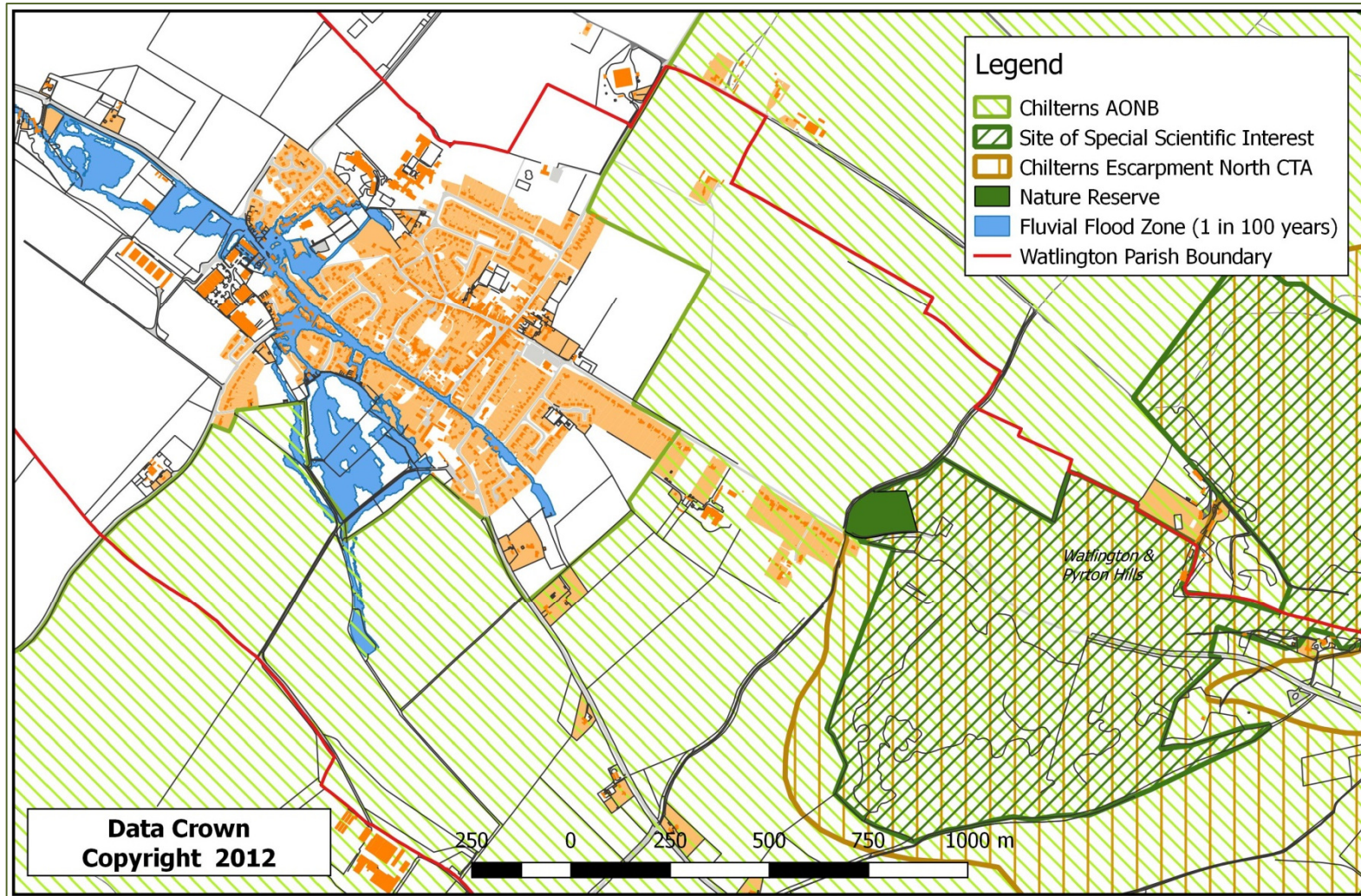


Map 3: Areas with special designations – built environment



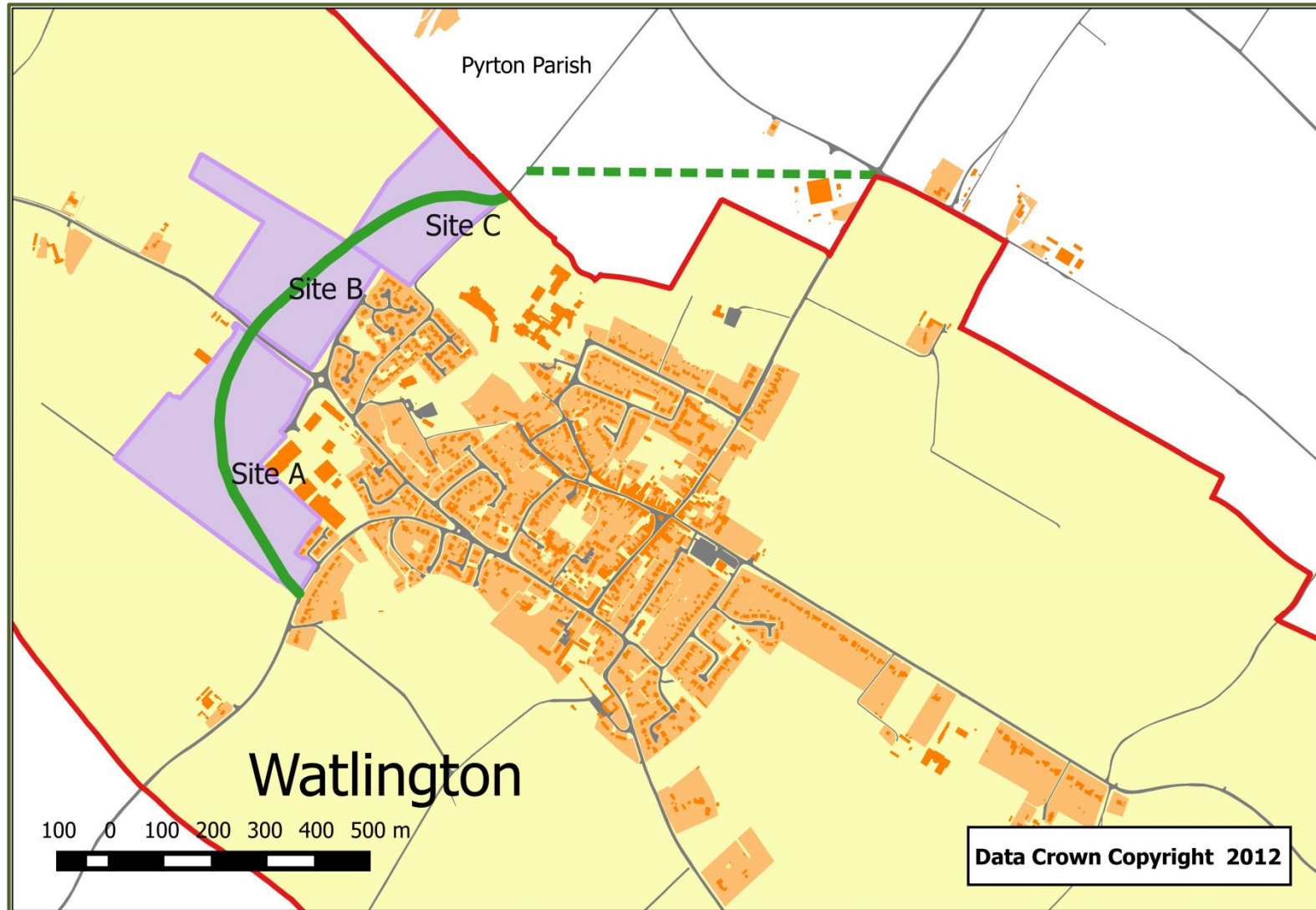


Map 4: Areas with special designations – natural environment



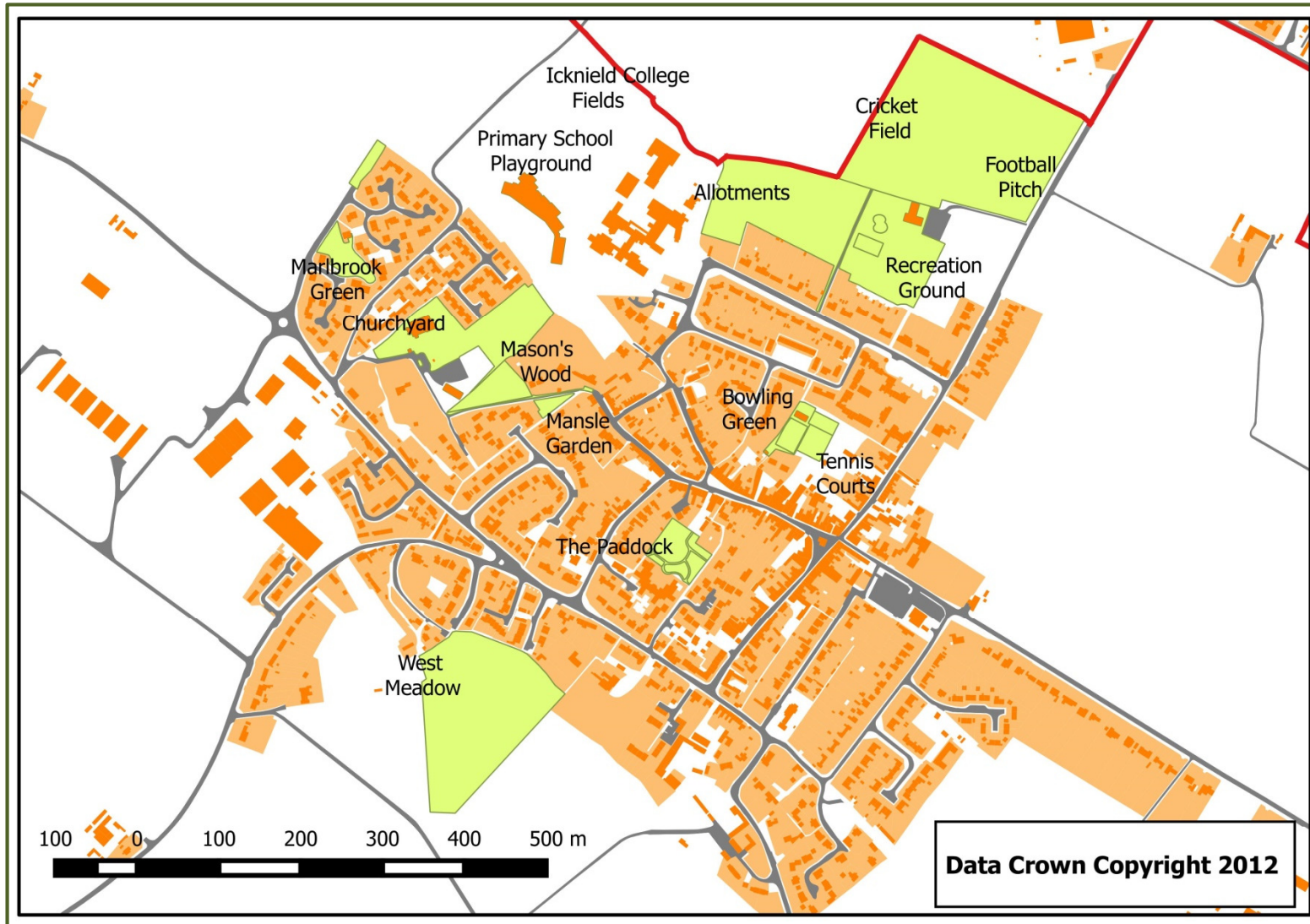


Map 5: Selected Sites



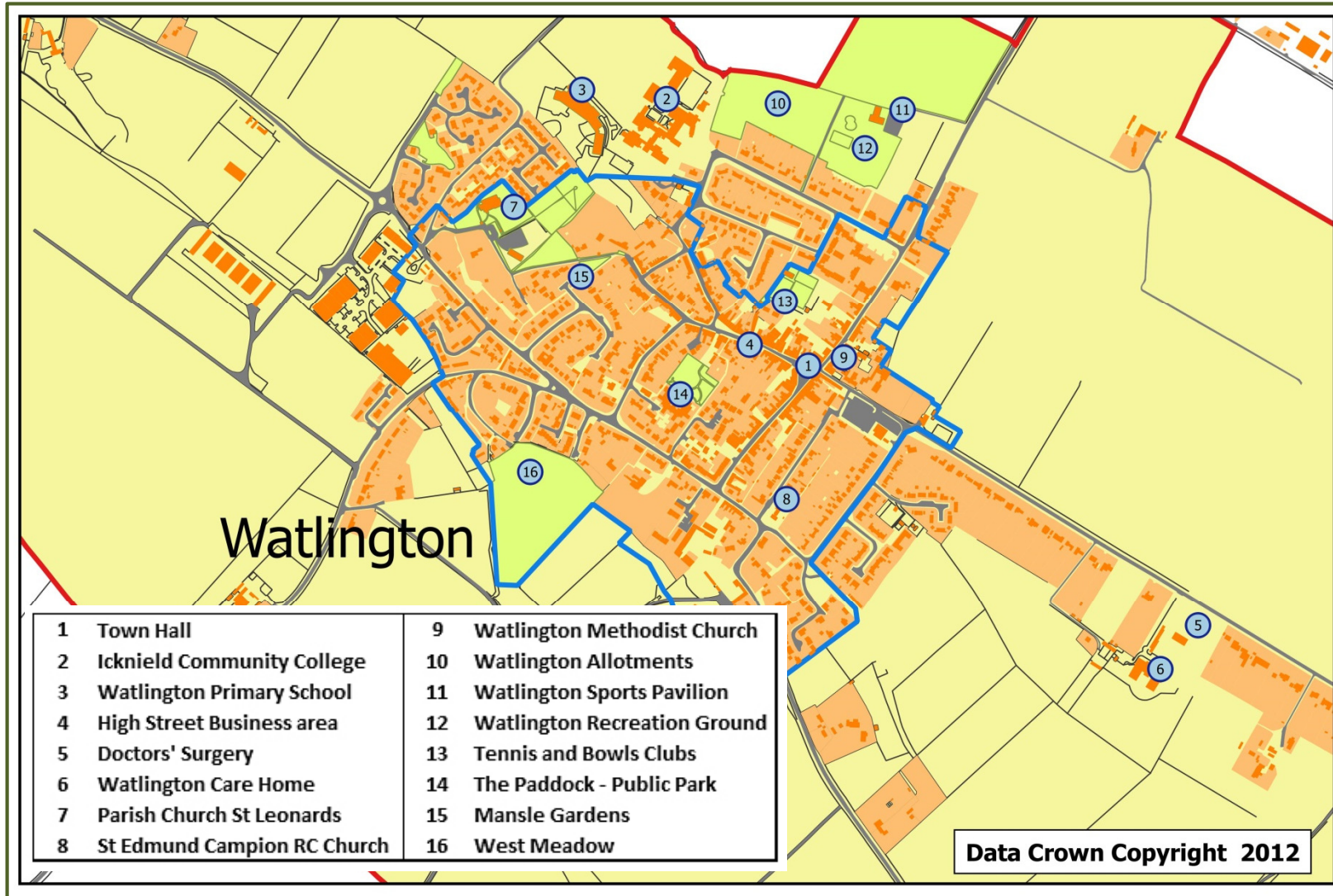


Map 6: Green Spaces



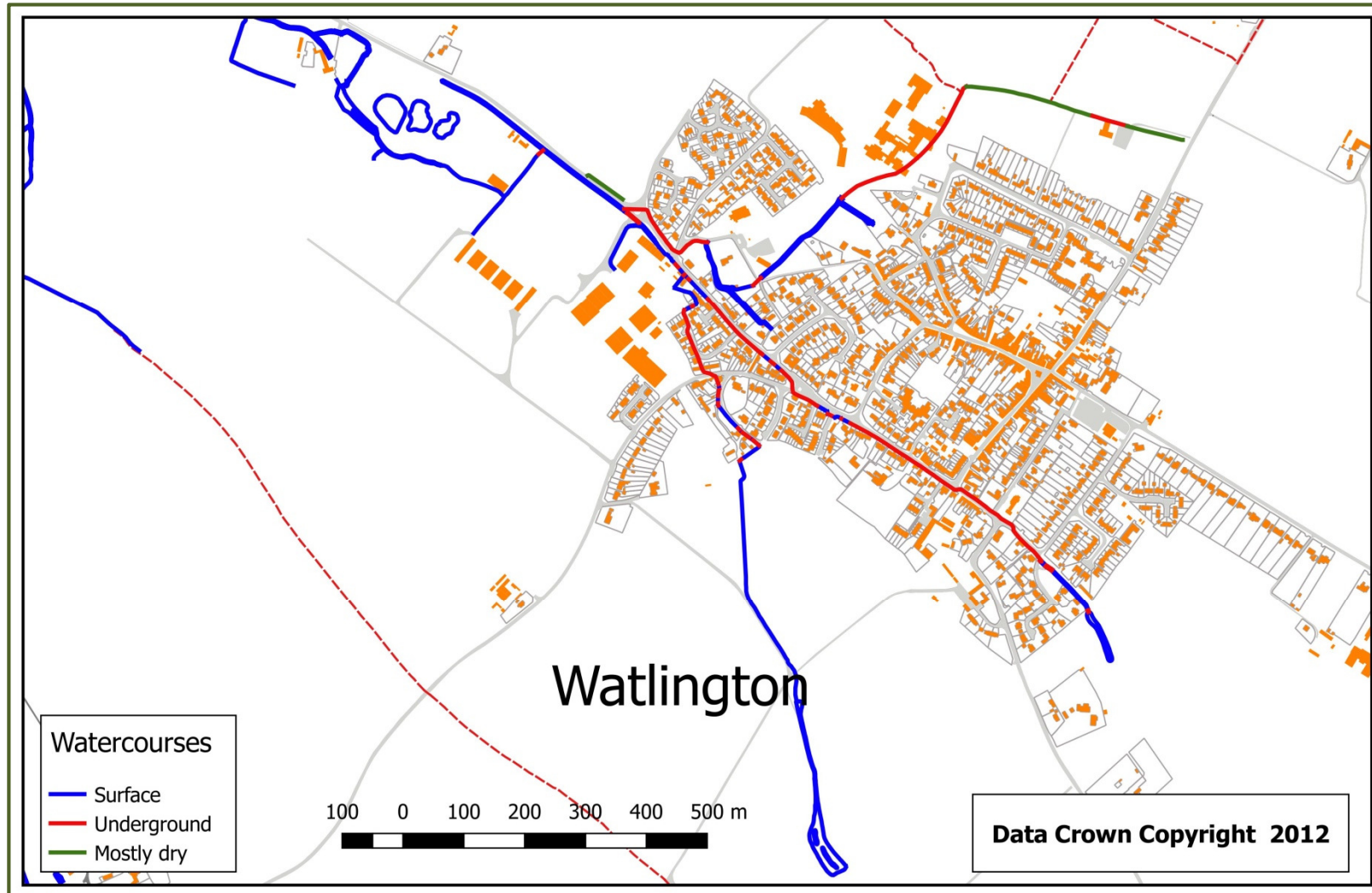


Map 7: Key Places



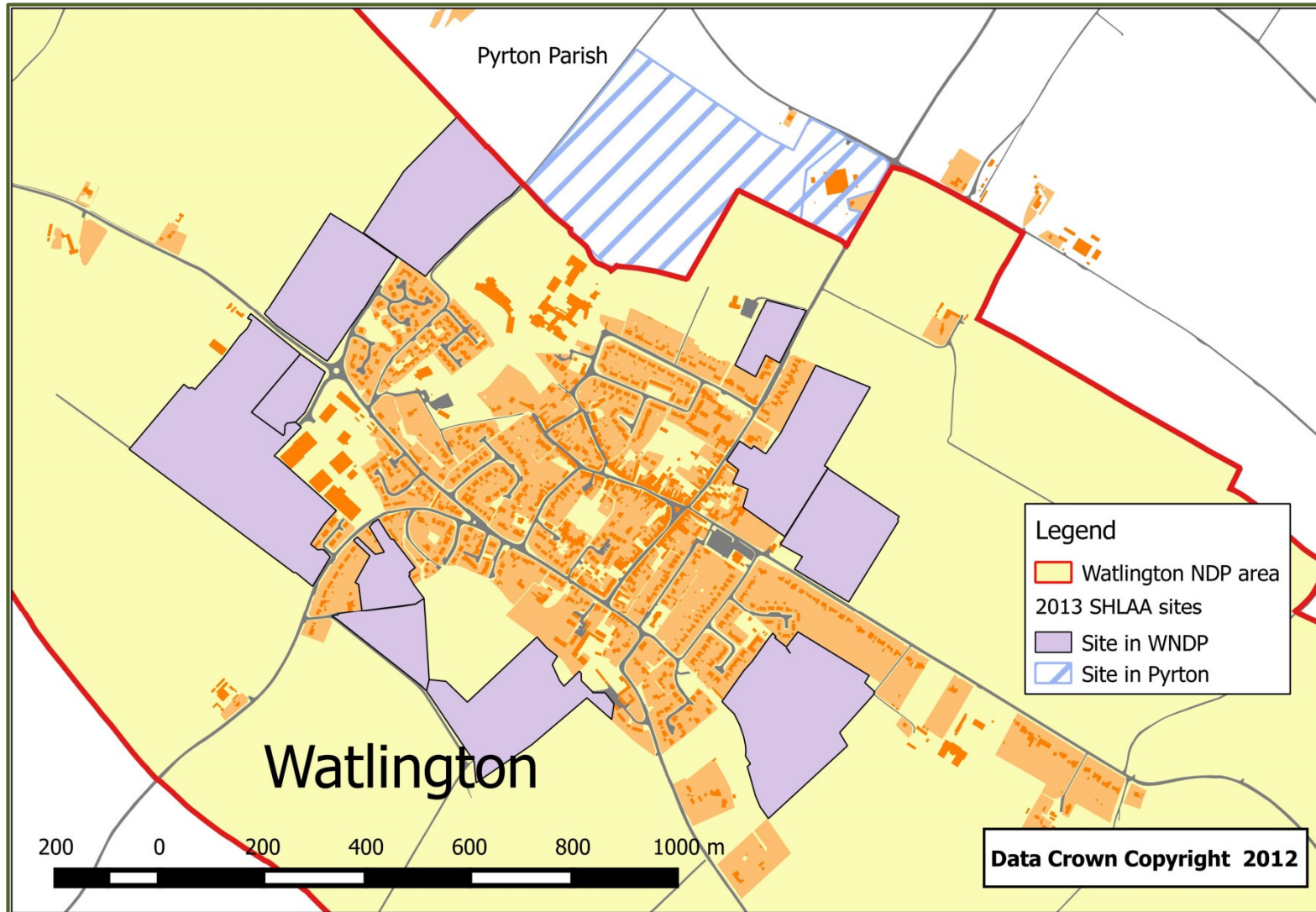


Map 8: Watercourses



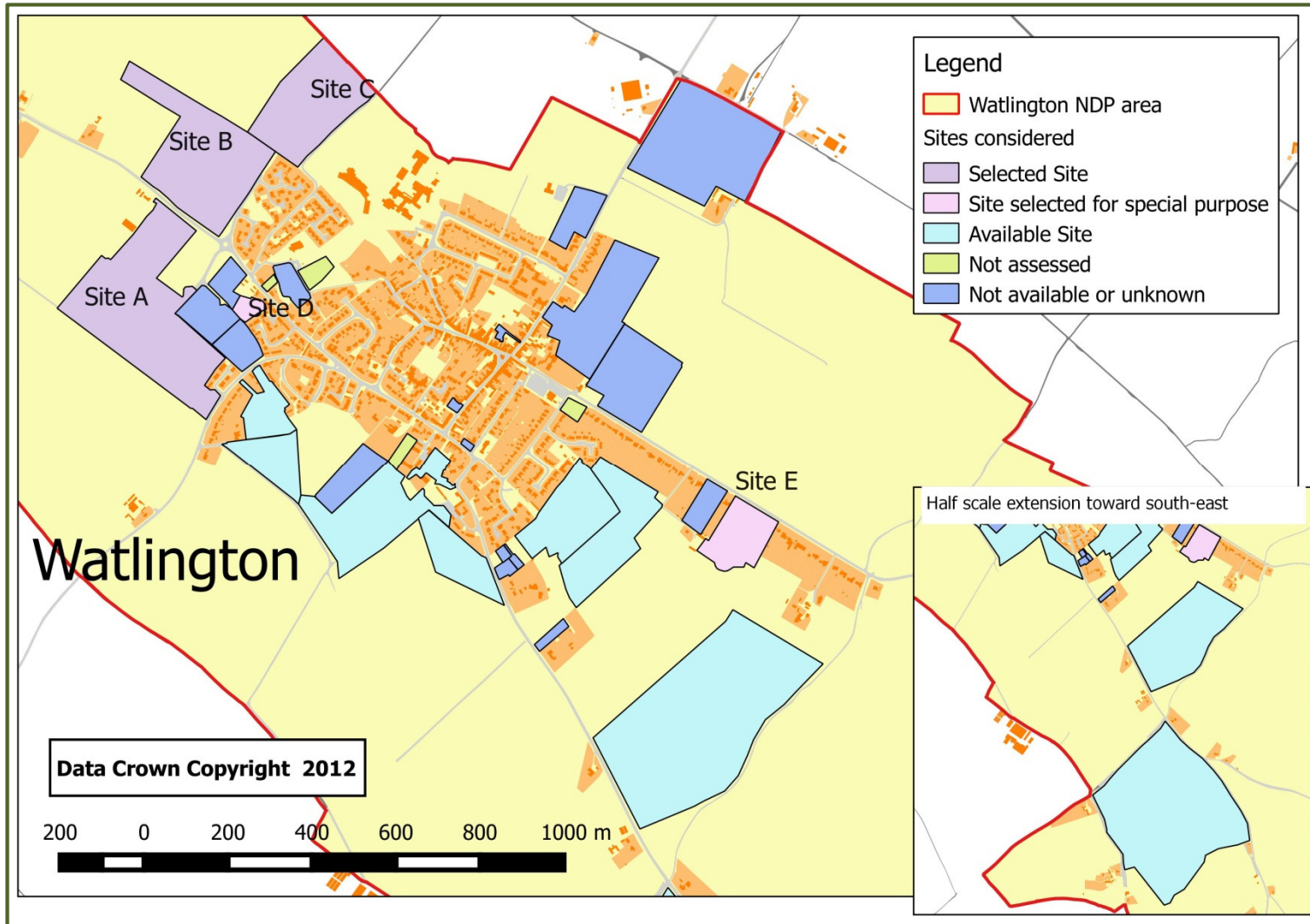


Map 9: 2013 SHLAA sites



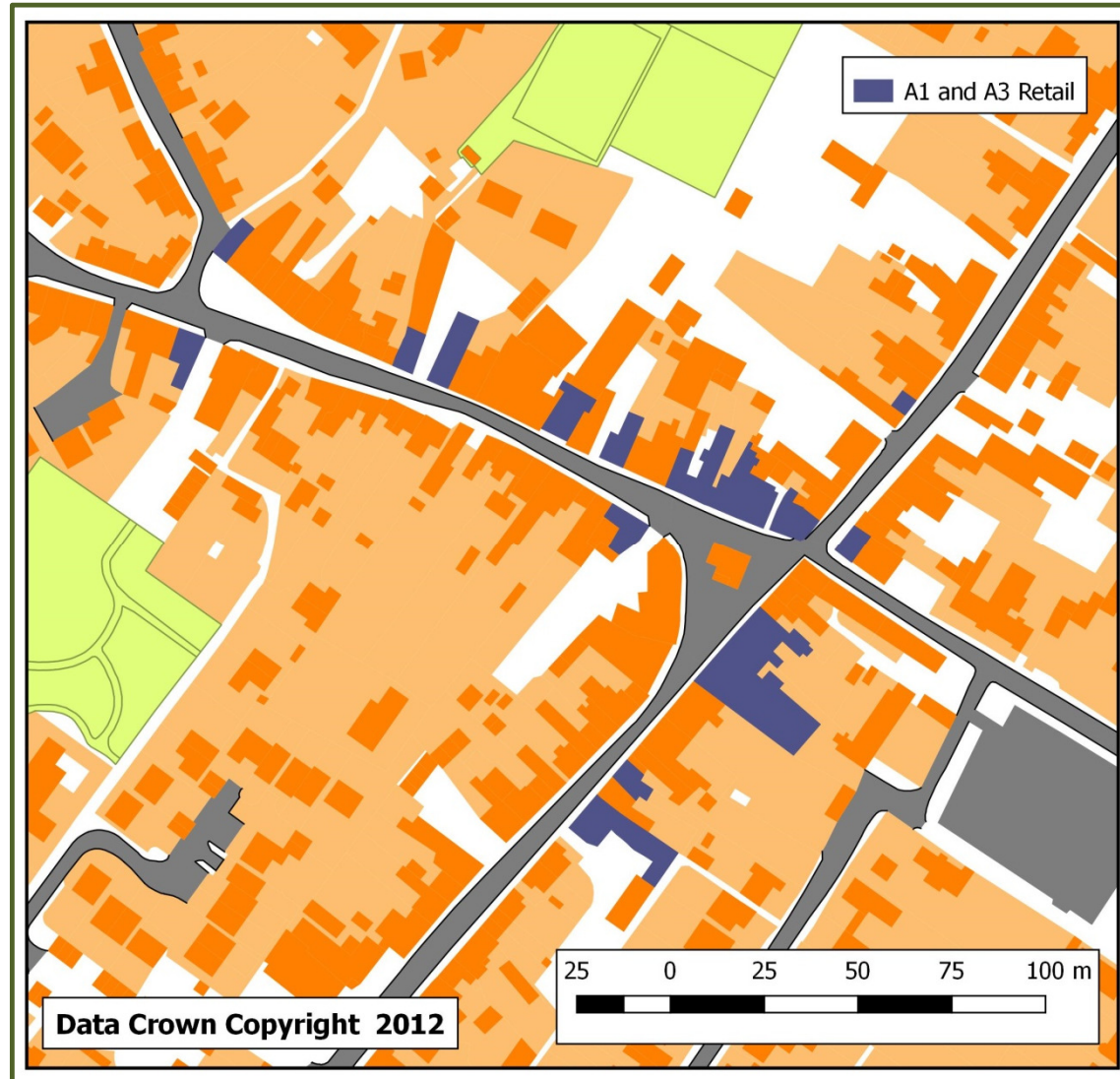


Map 10: Development sites





Map 11: Retail shops – A1 and A3





Map 12: Public Rights of Way

